



ESRC Business and Local Government
Data Research Centre

Green Infrastructure in Essex

Andrew Lovett

a.lovett@uea.ac.uk

10th February 2021

www.BLGdataresearch.org
[@BLGDataResearch](https://twitter.com/BLGDataResearch)

What is Green Infrastructure?

“Green infrastructure is a network of multi-functional green space, both new and existing, both rural and urban, which supports the natural and ecological processes and is integral to the health and quality of life of sustainable communities” (PPS12).

Types of Green Infrastructure (GI)

Parks and Gardens

Amenity Greenspace e.g. village greens

Natural and Semi-Natural Greenspaces e.g. woodland

Green Corridors e.g. rivers, cycle routes, footpaths

Other e.g. allotments, churchyards

GI is a form of *natural capital* that provides multiple benefits. These include support for *biodiversity*.



Background to the Essex Study

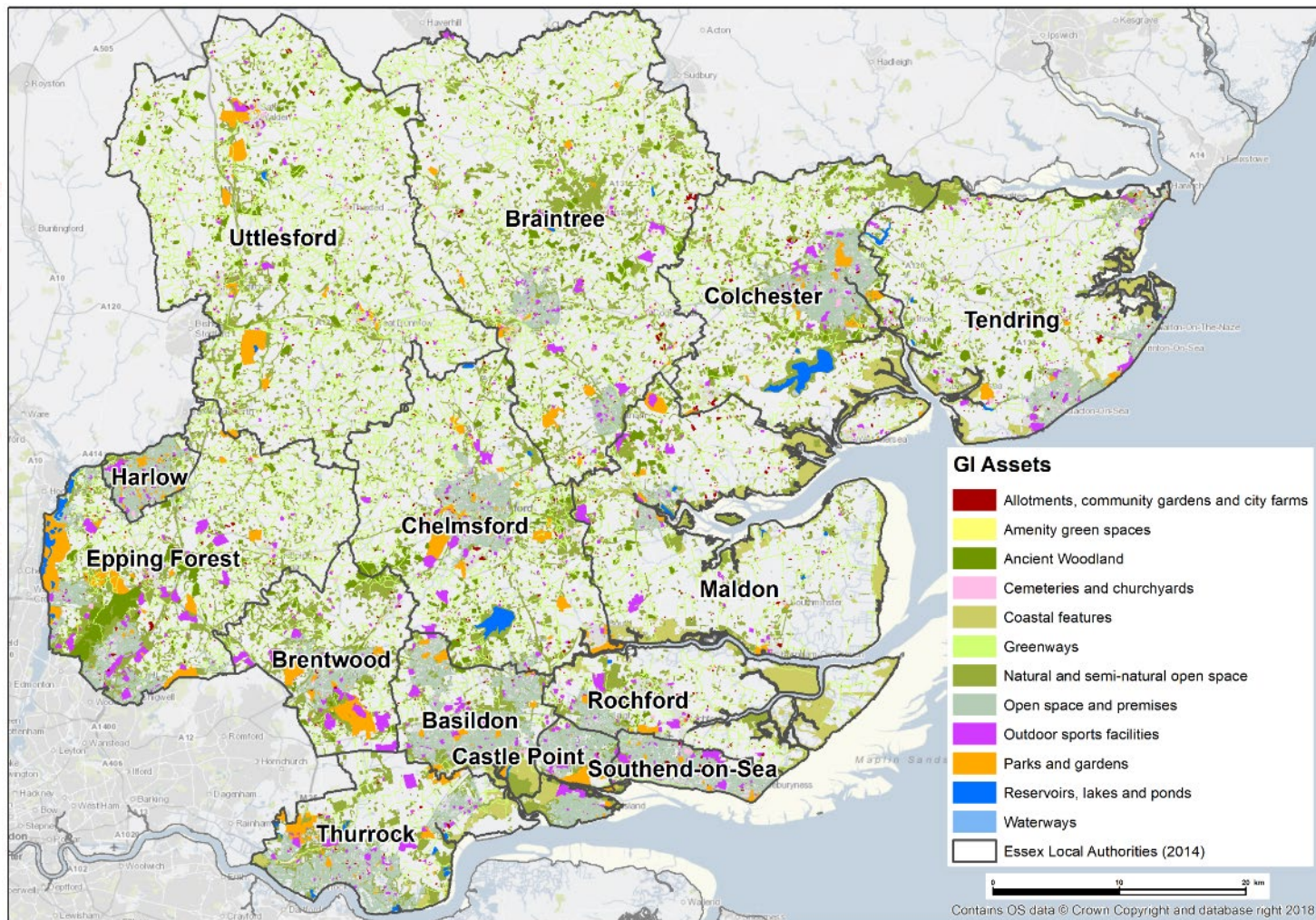
Researchers at the University of East Anglia (Norwich) and University of Essex collaborated with the County Council to provide analysis that underpins the Green Essex Strategy.



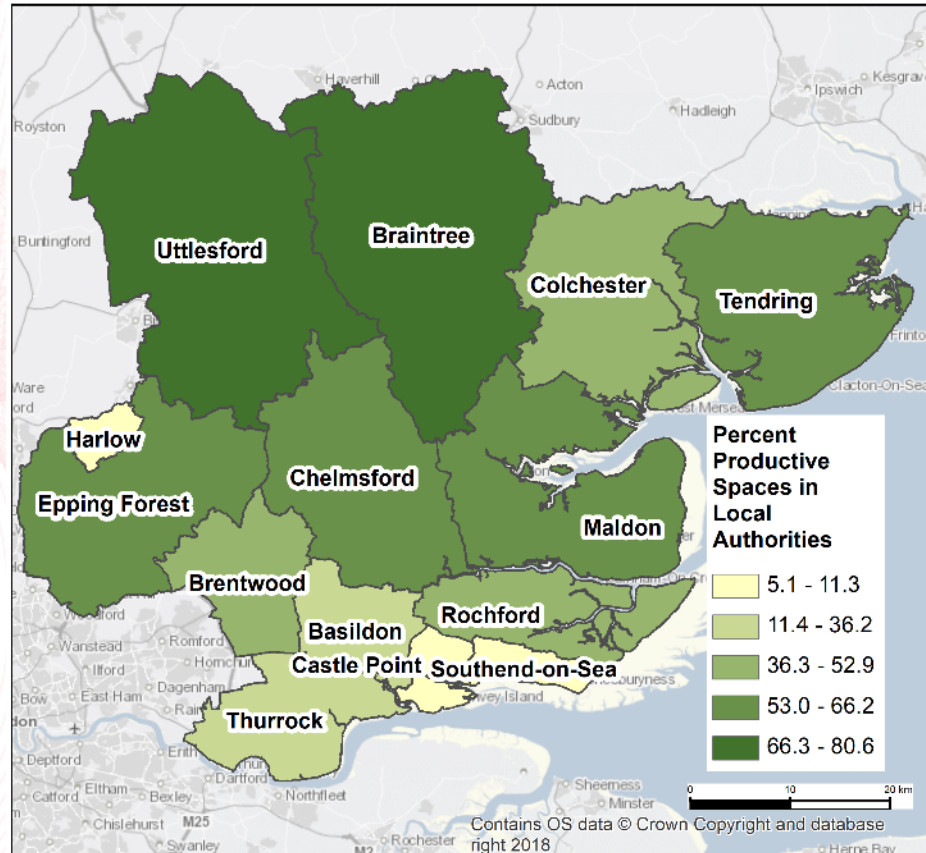
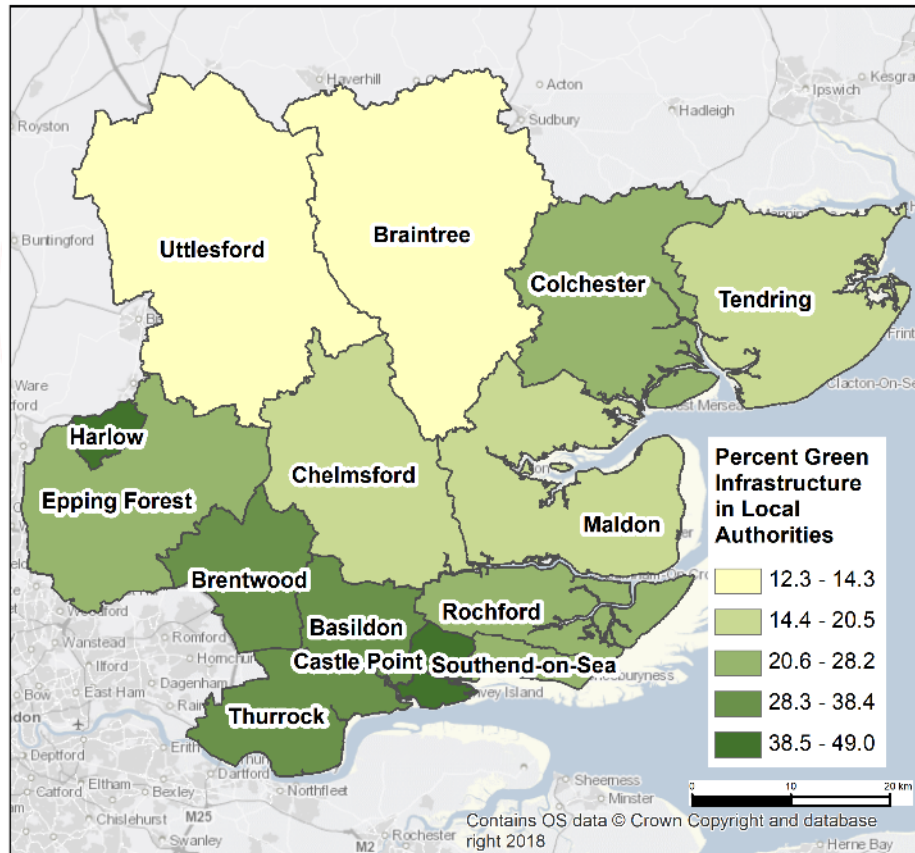
<https://www.essex.gov.uk/protecting-environment>



Greenspace Distribution



Distribution in Local Authorities



Proximity to Green Infrastructure



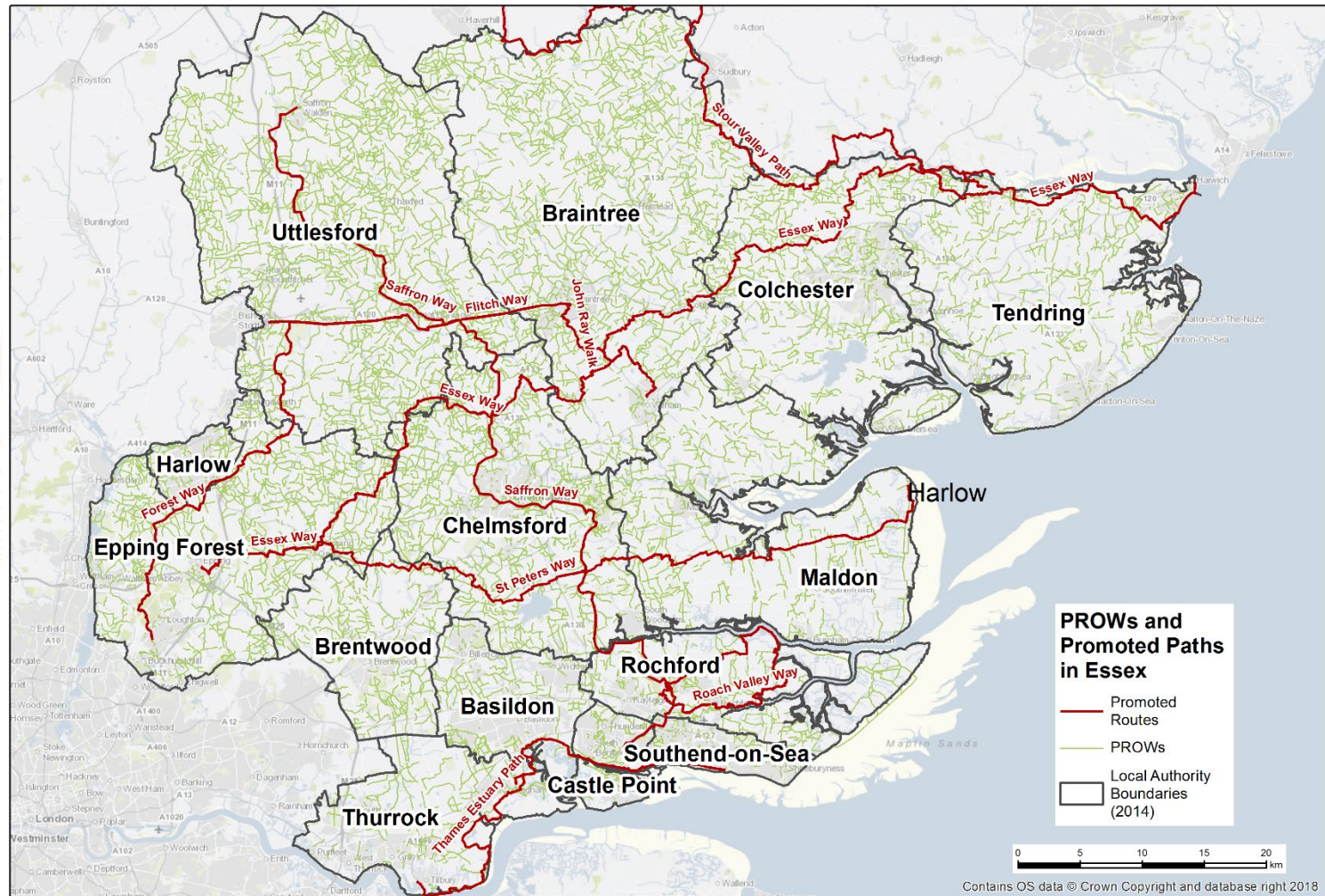
Accessible Natural Greenspace Standard (ANGSt)

Four benchmarks:

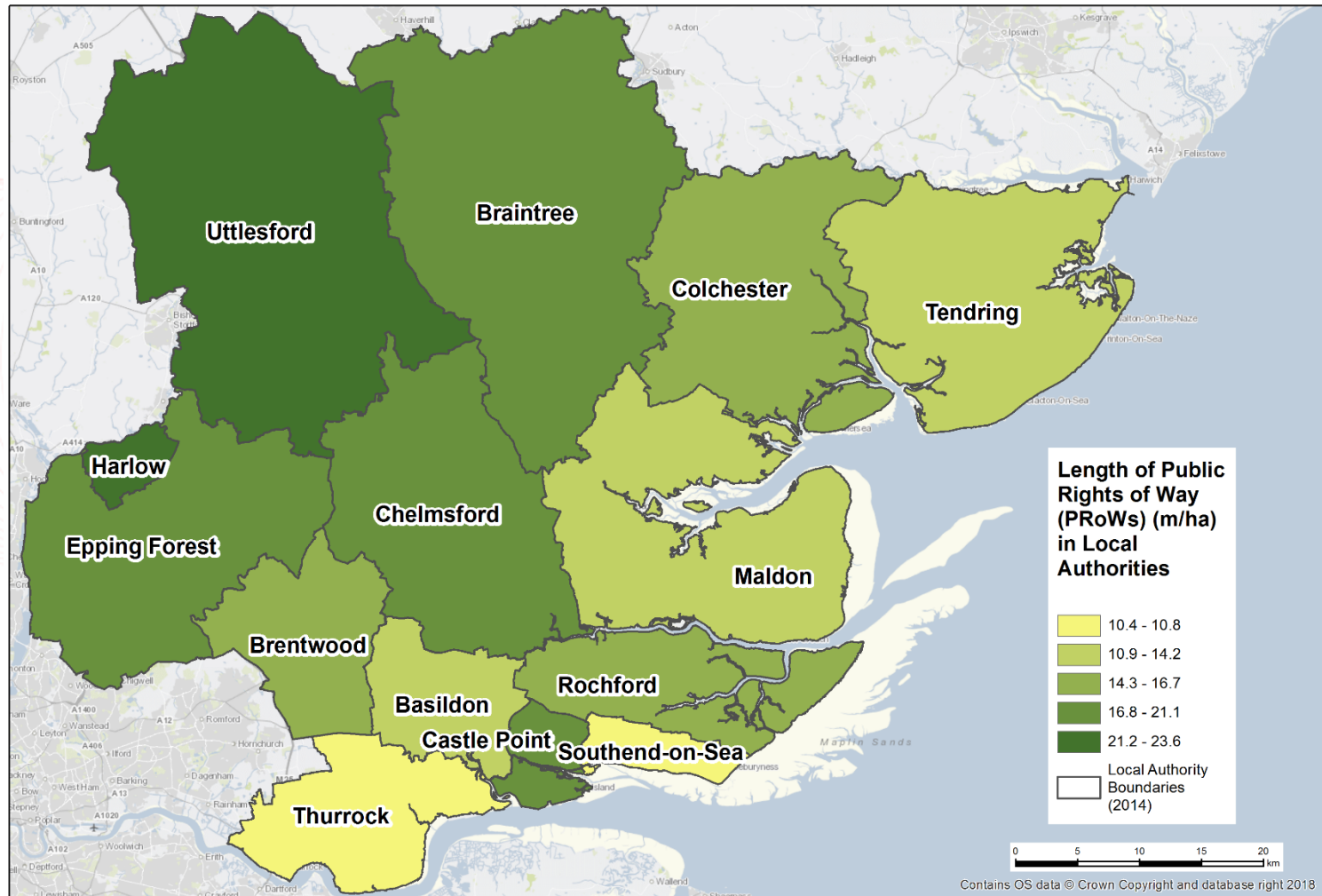
- i. an accessible natural greenspace of at least two hectares in size, no more than 300 metres (approximately 5 minutes walk) from home;
- ii. at least one accessible 20 hectare site within two kilometres of home;
- iii. one accessible 100 hectare site within five kilometres of home;
- iv. one accessible 500 hectare site within ten kilometres of home.



Footpaths and Rights of Way in Essex



Footpaths and Rights of Way in Essex



Future Opportunities

Measures in the current Environment Bill will introduce requirements for *Biodiversity Net Gain* in planning applications. This will create scope for GI and habitat creation/enhancement. *Local Nature Recovery Strategies* will need to be developed

Changes in agricultural policy will place more emphasis on funding linked to delivery of environmental benefits, including nature and landscape recovery.

Initiatives related to Green Recovery, implementation of the 25 Year Environment Plan and achievement of Net-Zero objectives will provide other opportunities.

