

2011 Census QA Pack - County Age-sex

All persons - Essex

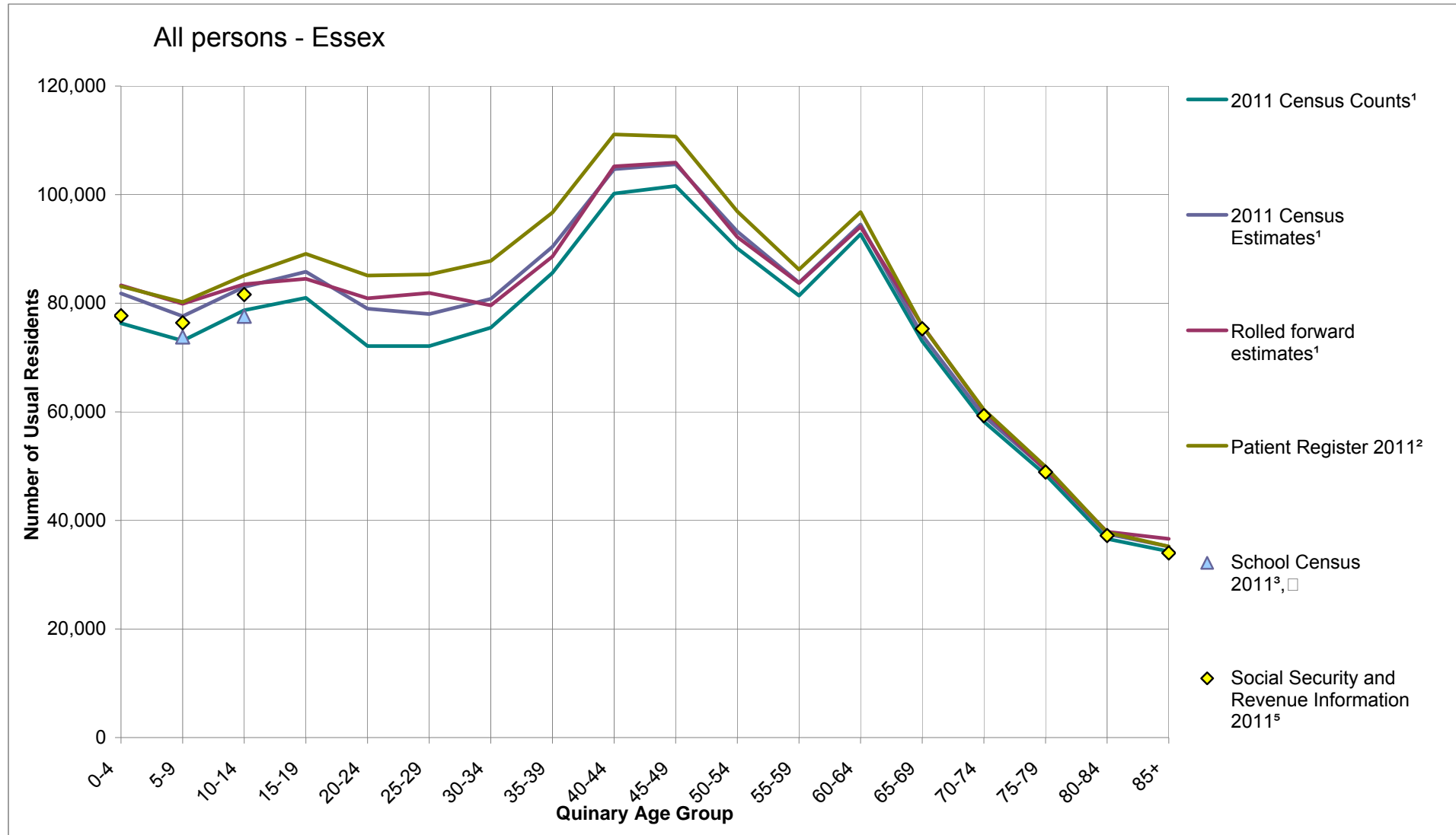
Age	2011 Census Counts <sup>1</sup>	2011 Census Estimates <sup>1</sup>	Rolled forward estimates <sup>1</sup>	Patient Register 2011 <sup>2</sup>	School Census 2011 <sup>3,4</sup>	Social Security and Revenue Information 2011 <sup>5</sup>	Response Rates
0-4	76,300	81,800	83,300	83,100		77,700	93%
5-9	73,100	77,600	79,900	80,200	73,800	76,400	94%
10-14	78,700	83,000	83,500	85,100	77,600	81,600	95%
15-19	81,000	85,800	84,500	89,100			94%
20-24	72,100	79,000	80,900	85,100			91%
25-29	72,100	78,000	81,900	85,300			92%
30-34	75,500	80,800	79,600	87,800			93%
35-39	85,600	90,400	88,600	96,700			95%
40-44	100,200	104,700	105,200	111,100			96%
45-49	101,600	105,600	105,900	110,700			96%
50-54	90,100	93,200	92,200	96,900			97%
55-59	81,400	83,800	83,700	86,200			97%
60-64	92,700	94,500	94,100	96,800			98%
65-69	73,000	74,100	75,900	75,800		75,300	98%
70-74	58,200	59,200	60,200	60,400		59,300	98%
75-79	48,400	49,400	49,300	49,900		48,900	98%
80-84	36,600	37,500	37,900	37,800		37,200	98%
85+	34,300	35,200	36,600	35,200		34,000	97%
<b>Total</b>	<b>1,330,600</b>	<b>1,393,600</b>	<b>1,403,400</b>	<b>1,452,900</b>	<b>151,400</b>	<b>490,400</b>	<b>95%</b>

Local Authorities within the selected Administrative County
Basildon
Braintree
Brentwood
Castle Point
Chelmsford
Colchester
Epping Forest
Harlow
Maldon
Rochford
Tendring
Uttlesford

Source: Office for National Statistics<sup>1</sup>, National Health Service Information Centre<sup>2</sup>, Department for Education<sup>3</sup>, Welsh Government<sup>4</sup>, Department for Work and Pensions/Her Majesty's Revenue and Customs<sup>5</sup>

Descriptive Metadata for tables in this pack is provided on page 2 - Descriptive Metadata for terms used -

2011 Census QA Pack - County Age-sex



2011 Census QA Pack - County Age-sex

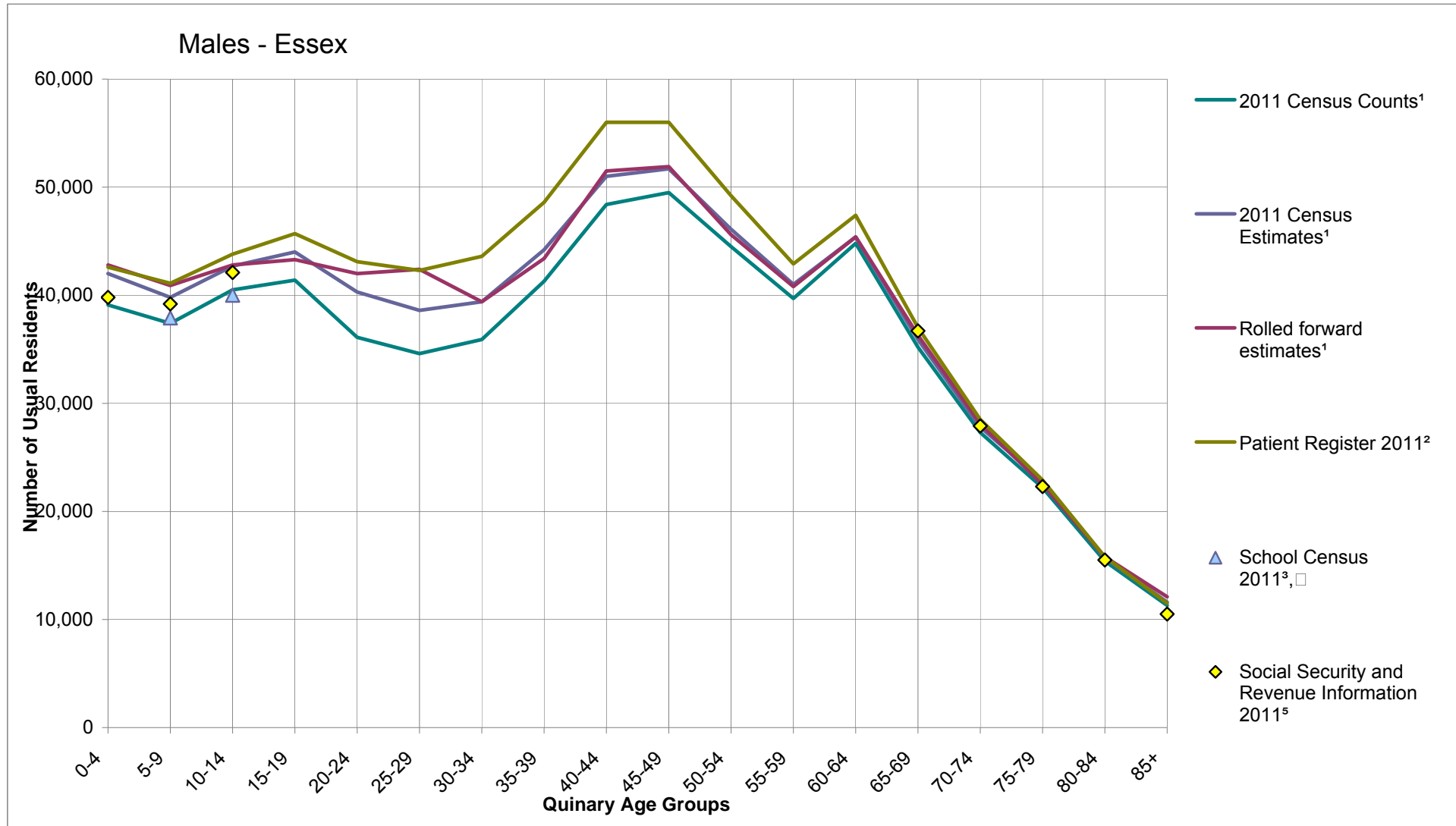
Males - Essex

Age	2011 Census Counts <sup>1</sup>	2011 Census Estimates <sup>1</sup>	Rolled forward estimates <sup>1</sup>	Patient Register 2011 <sup>2</sup>	School Census 2011 <sup>3,4</sup>	Social Security and Revenue Information 2011 <sup>5</sup>	Response Rates
0-4	39,100	42,000	42,800	42,600		39,800	93%
5-9	37,400	39,800	40,900	41,100	37,900	39,200	94%
10-14	40,500	42,700	42,800	43,800	40,000	42,100	95%
15-19	41,400	44,000	43,300	45,700			94%
20-24	36,100	40,300	42,000	43,100			90%
25-29	34,600	38,600	42,400	42,300			90%
30-34	35,900	39,400	39,400	43,600			91%
35-39	41,300	44,200	43,400	48,600			93%
40-44	48,400	51,000	51,500	56,000			95%
45-49	49,500	51,700	51,900	56,000			96%
50-54	44,500	46,100	45,600	49,200			97%
55-59	39,700	41,000	40,800	42,900			97%
60-64	44,800	45,400	45,400	47,400			99%
65-69	35,200	35,900	36,300	37,000		36,700	98%
70-74	27,300	27,800	28,100	28,500		27,900	98%
75-79	22,200	22,800	22,500	22,900		22,300	97%
80-84	15,400	15,700	15,800	15,800		15,500	98%
85+	11,300	11,600	12,100	11,500		10,500	97%
<b>Total</b>	<b>644,700</b>	<b>680,200</b>	<b>687,000</b>	<b>718,000</b>	<b>77,900</b>	<b>234,000</b>	<b>95%</b>

Source: Office for National Statistics<sup>1</sup>, National Health Service Information Centre<sup>2</sup>, Department for Education<sup>3</sup>, Welsh Government<sup>4</sup>, Department for Work and Pensions/Her Majesty's Revenue and Customs<sup>5</sup>

Descriptive Metadata for tables in this pack is provided on page 2 - Descriptive Metadata for terms used -

2011 Census QA Pack - County Age-sex



2011 Census QA Pack - County Age-sex

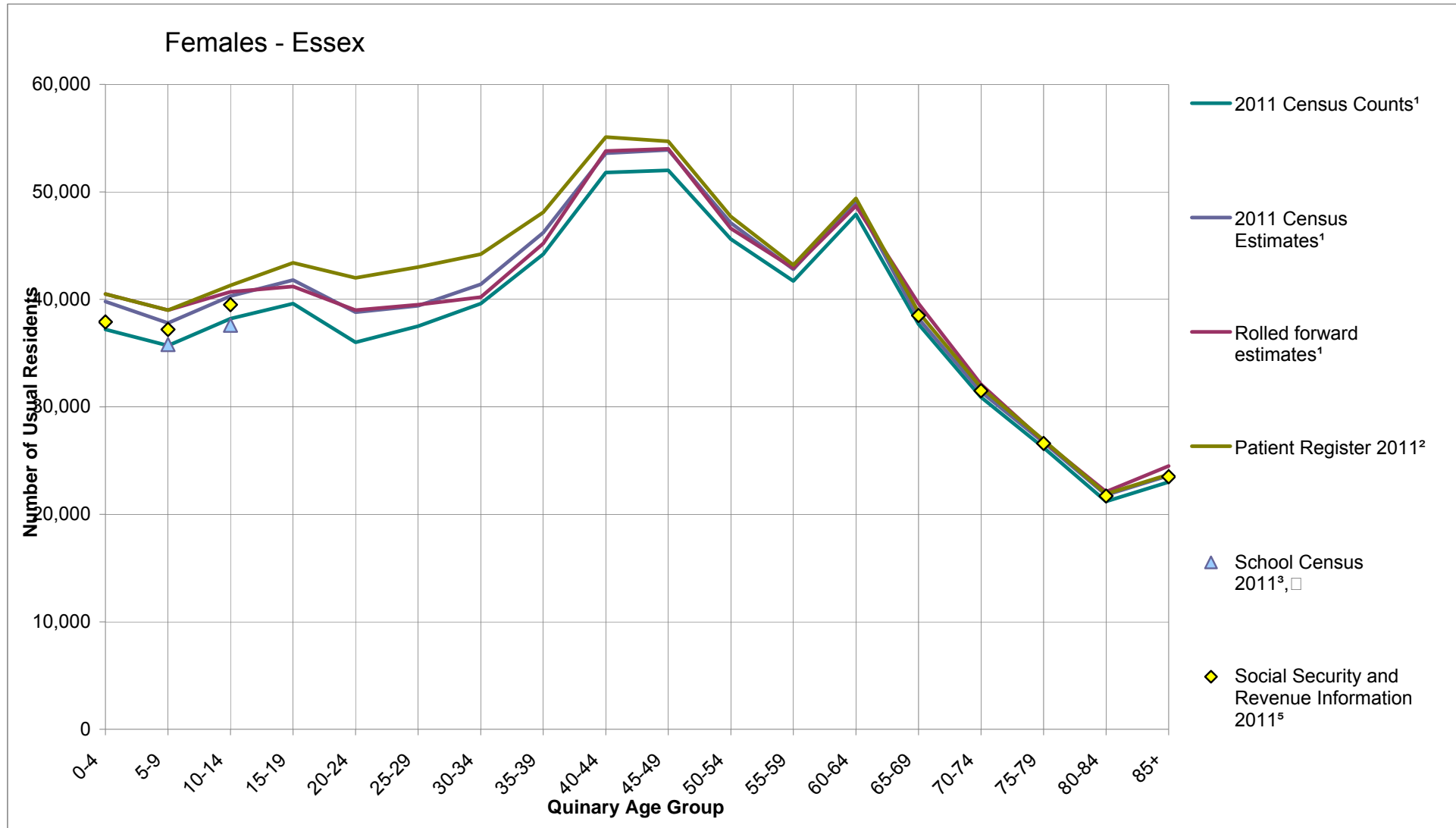
Females - Essex

Age	2011 Census Counts <sup>1</sup>	2011 Census Estimates <sup>1</sup>	Rolled forward estimates <sup>1</sup>	Patient Register 2011 <sup>2</sup>	School Census 2011 <sup>3,4</sup>	Social Security and Revenue Information 2011 <sup>5</sup>	Response Rates
0-4	37,200	39,800	40,500	40,500		37,900	93%
5-9	35,700	37,800	39,000	39,000	35,800	37,200	94%
10-14	38,200	40,300	40,700	41,300	37,600	39,500	95%
15-19	39,600	41,800	41,200	43,400			95%
20-24	36,000	38,800	39,000	42,000			93%
25-29	37,500	39,400	39,500	43,000			95%
30-34	39,600	41,400	40,200	44,200			96%
35-39	44,200	46,200	45,200	48,100			96%
40-44	51,800	53,600	53,800	55,100			97%
45-49	52,000	53,900	54,000	54,700			97%
50-54	45,600	47,100	46,600	47,700			97%
55-59	41,700	42,800	42,900	43,200			98%
60-64	47,900	49,100	48,700	49,400			98%
65-69	37,700	38,200	39,600	38,800		38,500	99%
70-74	30,900	31,400	32,100	31,800		31,500	98%
75-79	26,200	26,700	26,800	26,900		26,600	98%
80-84	21,200	21,800	22,100	21,900		21,700	98%
85+	23,000	23,600	24,500	23,700		23,500	98%
<b>Total</b>	<b>686,000</b>	<b>713,400</b>	<b>716,400</b>	<b>734,900</b>	<b>73,500</b>	<b>256,400</b>	<b>96%</b>

Source: Office for National Statistics<sup>1</sup>, National Health Service Information Centre<sup>2</sup>, Department for Education<sup>3</sup>, Welsh Government<sup>4</sup>, Department for Work and Pensions/Her Majesty's Revenue and Customs<sup>5</sup>

Descriptive Metadata for tables in this pack is provided on page 2 - Descriptive Metadata for terms used -

2011 Census QA Pack - County Age-sex



## 2011 Census QA Pack - County Age-sex

### Sex Ratio - Essex

Age	2011 Census Counts <sup>1</sup>	2011 Census Estimates <sup>1</sup>	Rolled forward estimates <sup>1</sup>	Patient Register 2011 <sup>2</sup>	School Census 2011 <sup>3,4</sup>	Social Security and Revenue Information 2011 <sup>5</sup>
0-4	105	106	106	105		105
5-9	105	105	105	105	106	105
10-14	106	106	105	106	106	107
15-19	105	105	105	105		
20-24	100	104	108	103		
25-29	92	98	107	98		
30-34	91	95	98	99		
35-39	93	96	96	101		
40-44	93	95	96	102		
45-49	95	96	96	102		
50-54	98	98	98	103		
55-59	95	96	95	99		
60-64	94	92	93	96		
65-69	93	94	92	95		95
70-74	88	89	88	90		89
75-79	85	85	84	85		84
80-84	73	72	71	72		71
85+	49	49	49	49		45

Source: Office for National Statistics<sup>1</sup>, National Health Service Information Centre<sup>2</sup>, Department for Education<sup>3</sup>, Welsh Government<sup>4</sup>, Department for Work and Pensions/Her Majesty's Revenue and Customs<sup>5</sup>

Descriptive Metadata for tables in this pack is provided on page 2 - Descriptive Metadata for terms used -

2011 Census QA Pack - County Age-sex

