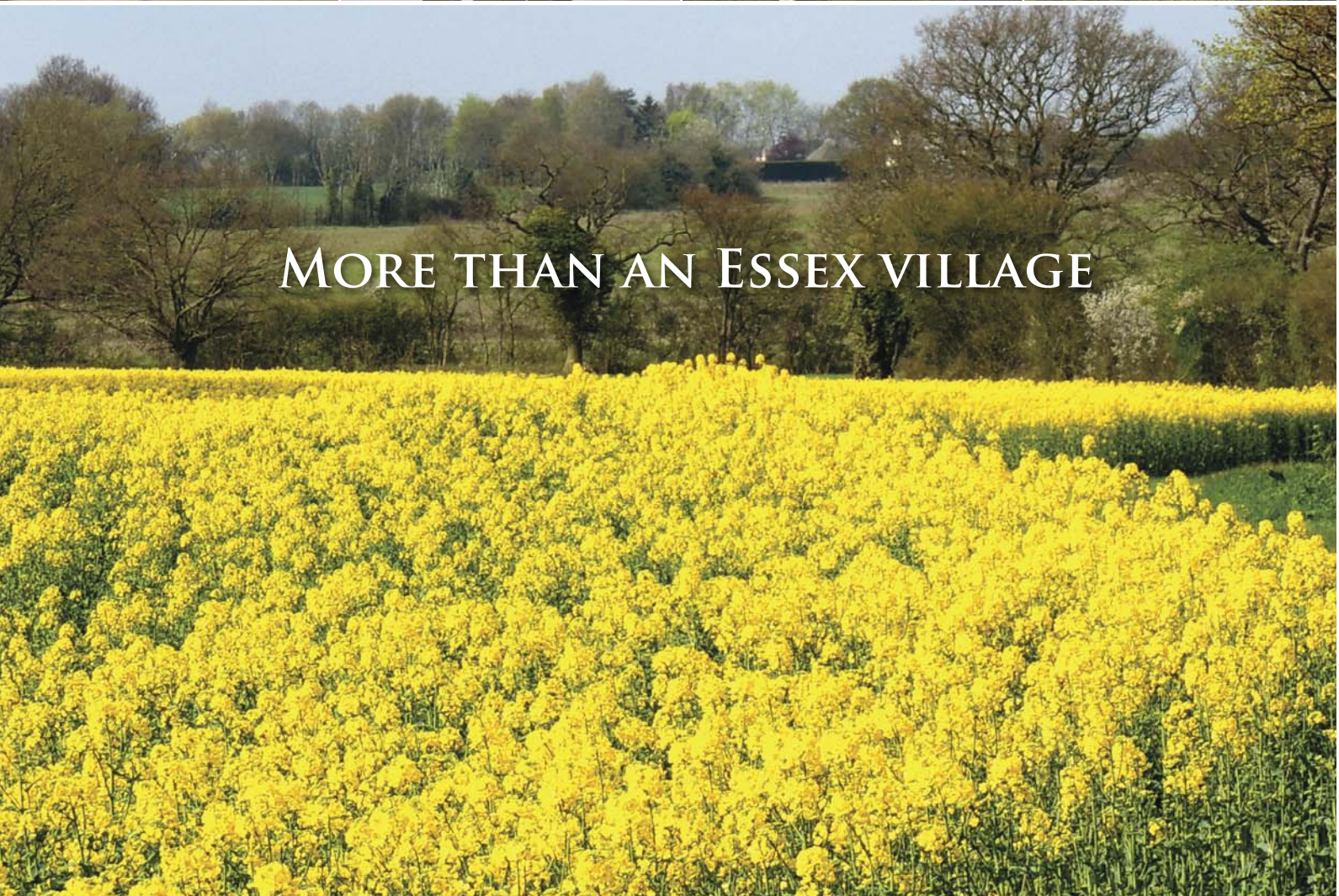


FELSTED PARISH

A PLAN FOR THE FUTURE



MORE THAN AN ESSEX VILLAGE




START THE JOURNEY

WELCOME TO FELSTED4
FELSTED THROUGH THE AGES5
PRESENT DAY FELSTED6
WHY PRODUCE A PARISH PLAN? ..7
SURVEY RESULTS8-15
ACTION PLAN16-19

**One of the best places to live in
the East of England**

The Sunday Times



There's such a great community spirit in Felsted, people are always willing to help

72%

say speeding in the village is a problem

The majority of businesses surveyed felt they benefited from being based in Felsted

62%

of residents felt that the Parish should remain a group of hamlets in open countryside

Felsted is first mentioned in the Domesday Book



WELCOME TO FELSTED

In Felsted, we live in a beautiful rural community of sixteen very distinct hamlets, with a ‘village’ centre at the heart of the Parish. It is easy to imagine that it has always been like this and will always stay like this, but we’re all aware that there are pressures for things to change.

Small communities are particularly vulnerable to events beyond their control. As residents of a small community, it is our responsibility to take action to give our input into the forces of change. One way of doing this is to have a Parish Plan.

Uttlesford District Council is setting out development plans for the next twenty years, and one of the ways we can influence those plans is by presenting our view of what should happen to the Parish. It is generally accepted that the production of a Parish Plan is an important first step in recording and making known the views of a local community for incorporation into wider District, Regional and National initiatives. To that end, around three thousand Parish Plans have, so far, been published across the country.

The Parish Plan is an evolving document, outlining how we, the residents, would like the Parish to develop over

the next ten years. It is an expression of residents’ views resulting in the creation of an action plan that demonstrates how these developments can be achieved.

For the plan to be able to influence decision makers, whether planning teams or community project funding bodies, it needs to be able to demonstrate that all the villagers have had an opportunity to give their input, and that the key conclusions are those of the village. This is why Felsted residents, organisations and businesses have been surveyed over the last year.

We would like to take this opportunity to thank everyone who has contributed to the success of this project. There has been a great deal of hard work done, all on a voluntary basis, so we would encourage everyone to read the plan and to get involved in the actions and activity generated. It is only by parishioners getting involved that things change.

FELSTED THROUGH THE AGES

There was probably a settlement in Felsted as early as the Stone Age and there is evidence that the village was inhabited throughout the Bronze Age and the Roman Occupation. However, the first written evidence of a settlement comes with the Domesday Book of 1086 when about 360 people lived in the village. The Normans were also responsible for the church tower of Felsted's Grade I listed church which dates from 1120.

From the time of the Domesday Book to the fourteenth century the whole of Felsted Parish was under the ownership of the Lord of the Manor. At that time, the Manor House was in the centre of the village, close to today's Grade II listed Bury. At that stage the Manor of Felsted was owned by the Holy Trinity Abbey in Caen until the war with France in 1338 when it was confiscated by the crown. One hundred years' later the manor was given to the Abbey of Sion who held it until the monasteries were dissolved by Henry VIII in 1536.

After the dissolution of the monasteries the multitude of properties confiscated by the crown were redistributed to allies of the King. One such ally was Richard Rich, who 'acquired' up to 100 manors, mainly in Essex. He chose to build a mansion for himself on the site of the old Augustinian priory (Leez Priory) on the outskirts of the village. Parts of the Grade I listed building still stand today.

Richard Rich became Lord Rich, Earl of Warwick, and by 1564 had retired from court life. He started a series of good works in Felsted, possibly to atone for various misdemeanours. His major foundation was that of Felsted School in 1564 in the vacant 'Trinity Guildhall' in the centre of the

village. He also established the village alms houses. During the 1600s Oliver Cromwell sent three of his sons to Felsted School after marrying Elizabeth Bouchier of the Felsted Manor of Grandcourts.

Throughout this period and the 1700s, Felsted was a place of rural industry and had at least one windmill and two watermills. The industrial revolution brought the brewery to Hartford End in 1842, the brickworks to Causeway End, and the railway in 1869, although the majority of the land was still agricultural. In Victorian times the population of Felsted grew to about 1,860.

During the course of the twentieth century, agriculture in Felsted saw the biggest change, as the proliferation of small farms disappeared, with the farmhouses becoming private houses and their land being merged into larger holdings. Livestock also disappeared, with the majority of the remaining farms being solely arable. The century also brought other changes, including the building of the sugar beet factory at Little Dunmow in 1926. About 55 years later, the factory was pulled down and replaced with the housing development, Flitch Green.

The railway and Felsted Station closed in the late 1960s following the Beeching reorganisation of the national railway system. The population of Felsted grew slowly in the twentieth century, with small pockets of housing in-filling gaps in the village, and the population is now just under 3,000. Whereas in the past residents worked in or near the village, a large proportion of villagers now commute to the surrounding towns and beyond.





PRESENT DAY FELSTED

Although there have been a number of changes in recent years throughout the Parish, Felsted retains the underlying charm and attraction of a rural Parish with the community and village at its heart. This is what attracts people to the area and this is what we must seek to preserve.

Agriculture has shaped the landscape and even though there has been ongoing development in the settlements, they are still surrounded and separated by open arable land, copses and miles of native hedgerows. Felsted remains true to its Old English name, 'Open-land place'.

The Parish is criss-crossed by the rivers Ter and Chelmer, and in one of these small valleys lies the scheduled monument of the ancient 'fish ponds' belonging to the monks of the Augustinian monastery at Leez Priory.

There are over 110 listed structures in the Parish dating back to the eleventh century, and the Parish is dominated by tiled and thatched timber frame buildings. This is the natural and historical heritage that Felsted residents are keen to conserve and protect.

Amenities for the Parish are largely concentrated in the village centre, which hosts the historic Felsted School. There are a number of shops including the village shop, Linsells, and the post office as well as a number of restaurants and pubs. The Grade I listed Parish church, Holy Cross, is also in the centre of the village as well as the United Reformed Church. Other village centre based services include Felsted surgery, the Parish 'Memorial' hall and the village playing fields with a newly improved children's playground.

In the outlying hamlets, services have diminished over time but the Felsted Primary School is a vital feature of Watch House Green and there is a Mission Church at Crix Green. Playgrounds remain at Bannister and Willows Greens but there are no shops or pubs in these hamlets. Although the brewery at Hartford End closed in 2005, there is still a vineyard and microbrewery at Crix Green.

There is a thriving cultural and social scene in Felsted catering for all ages, with many clubs ranging from a Choral Society to the Friendship Club, Horse Society and Toddler Group. Felsted also has a number of community support organisations which help vulnerable members of the community.

The Parish demographic is changing over time, and census results from 2001 and 2011 show an increase of nearly 5% in the number of residents over the age of 65. In 2011, the number of people in full-time work exceeded 33% and is seconded by the percentage of people who are retired (19%). In 2013, Felsted was voted one of the best places to live in the East of England by The Sunday Times newspaper and residents remain keen to protect the Parish as a beautiful and thriving place to live.

WHY PRODUCE A PARISH PLAN?

The decision to create a Parish Plan was born out of a concern from both residents and the Parish Council that the village didn't have a collective 'voice' to be considered in the face of proposed development. As the process began, however, it became apparent that a Parish Plan would also give Felsted residents the opportunity to shape improvements to facilities and services in the village over the next decade.

On 12 April 2012, the first meeting of residents and Council members was held in the URC hall. Over 30 residents attended. This meeting took the form of a Community Workshop and was facilitated by Jan Cole the local officer of a rural development charity, the Rural Community Council of Essex (RCCE).

During the course of this session, attendees identified local issues that concerned them. These issues were then prioritised in group discussions and were then voted on. People also volunteered for the various responsibilities and tasks that accompanied the creation of our Parish Plan and agreed a second meeting date. Jan Cole wrote up the results of the session and produced a table of activities, and another of activists, before most of the workshop attendees met again on 10th May 2012.

At that meeting, attendees agreed to go forward with the Plan and a Steering Group was formed.

An initial timeline of activities needed to produce a Parish Plan was quickly established by the Steering Group, together with a constitution and a bank account to manage the funding received from the Heritage Lottery Fund and from Essex County Council (via the Parish Council).

The first step in the construction of the plan was to find out about the people of Felsted Parish and what they felt about their community. A survey was devised, based on the issues identified in the community workshop. Advice was sought from the RCCE, and the survey was carried out. All households and a selection of organisations, schools and businesses received a survey copy, and a large number of volunteers managed the delivery and collection of the questionnaires. A total of 932 adults and 156 young people from 523 households completed and returned the anonymous surveys.

At that point, the household surveys were collated and entered into a database by a data-entry company. The organisation, school and

business surveys were also collated and analysed. The results form the basis for the Parish Plan actions and were presented to the community at an exhibition on 29th June 2013.

The exhibition feedback and the results of the survey were formally presented to the Parish Council, and an action plan was agreed. The Parish Council then formally adopted the Parish Plan at their 1,000th meeting on December 4th 2013 and progress on achieving the agreed actions will be formally reviewed at the Council's AGM in April 2014.

Critical to the success of the Parish Plan is the involvement from volunteers in the community. Projects to get involved with will vary from short term that may only take a few weeks to complete to longer-term projects, so do get involved.

Our Parish

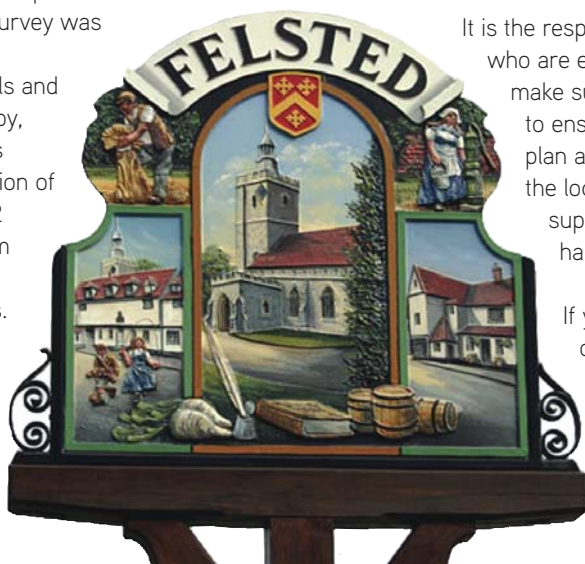
We are very fortunate in this Parish to have a superb landscape, historic buildings and a rich historical heritage. We also benefit of access to local shops and post office, doctor's surgery, pubs, schools, village hall and recreational facilities. It is the responsibility of all the residents within the Parish to do our best to keep them, protect and improve them. Not just for ourselves but for future generations.

Be a part of it

Many 'actions' are proposed in this Plan; not all of them will happen overnight and some may vary along the way.

It is the responsibility of Felsted Parish Council, who are elected to work for the community, to make sure that everything possible is done to ensure that the actions set out in this plan are carried forward for the benefit of the local community. They will need the support of the community to make this happen.

If you would like to volunteer your time or skills to help implement the action plan and positively shape the future of our Parish then please refer to the contact details on the back cover.



SURVEY RESULTS

This section of the Parish Plan lays out the priority issues for parishioners, based on the survey results and the feedback received at the Parish Plan Exhibition. The results have been grouped under four themes; Roads, Housing and Development, Amenities and Community. Full survey results are available on the Parish Council website (www.felstedparishcouncil.co.uk).

Critical to the success of the Parish Plan is how the Parish Council engages with parishioners to encourage people to get involved. But it's not a one-way process. Please do offer your help to make a difference in our Parish and safeguard its future. Projects to be involved in might only take an afternoon of your time. It won't all be committee meetings and inaction. The Parish Council contact details are on the back cover of this Parish Plan.

Demographic

34% of the survey respondents live in Felsted village itself, and 38% in the hamlets of Bannister Green, Willows Green, Watch House Green and Causeway End. The remainder are scattered through the rest of the Parish.

Age profile

The age profile of residents is concentrated in the middle to more senior end of the spectrum (45–75 years) with 18–25 year olds being the least represented group. The age profile of children included in the survey is concentrated in the 5–9 and 14–17 year old categories.

Employment status

The status of residents divides fairly evenly between those in employment and those in retirement, with a small percentage in education (2.5%) or unemployed (4.5%). Of those who travel to work or education, less than a quarter travel more than 30 miles. Approximately half travel less than 30 miles, and the remainder work from home.

Transport

The main means of transport is overwhelmingly private car or van (more than 80%). Less than 10% travel by bus, and progressively less by foot, bicycle, taxi or motorcycle.

Roads

Congestion and parking

An overwhelming majority (90%) of respondents considered traffic congestion in Felsted a problem, and nearly as many (80%) felt the same about car parking. Particular areas of concern were Felsted Primary School (Watch House Green) and Felsted Preparatory and FKS schools. Suggested methods of easing congestion were, in order of preference, additional parking provision at schools; walking buses; no-stopping orders; and double yellow lines.

Speeding

72% of the respondents agreed that speeding within Felsted is a problem. Suggested methods of reducing speeding were, in order of preference, vehicle triggered illuminated speed limit signs; community speed watches; and speed cameras.

Through traffic

70% of the respondents agreed that there is too much through traffic in Felsted. A similar proportion (67%) agreed that ongoing development at Flich Green exacerbates through traffic problems in Felsted.

Bus service

Most respondents felt that there was a good bus service available, although it is interesting to note that those who use the service regularly were less convinced. Most also wanted extra bus services to nearby towns.

Roads and pavements

Repairs and maintenance: Most felt that roads were not being repaired in reasonable time. However, the majority agreed that pavements are kept in a reasonable state of repair for pedestrians.

Zebra Crossings: Most agreed there was a strong case for having a zebra crossing for pupils at Felsted Primary School, whereas opinion was divided about the need for an additional zebra crossing at Follyfield House.

Street lighting: Respondents were satisfied that adequate street lighting is provided in the village and throughout the Parish. However, many felt it could be switched off at midnight (except at junctions and crossings).

Other road users

Respondents were asked to comment on whether they felt 'cycle lanes are required on certain roads' and whether 'motorists do not consider other road users when passing'. Opinion was divided on both these issues.



SURVEY RESULTS

Housing and development

The feeling that the Parish should remain a group of hamlets in open countryside was emphatically endorsed, with 62% of those surveyed strongly agreeing with that sentiment.

Development

There were mixed reactions to the statement that the Parish has developed too much in recent years, although rather more agreed with the statement than otherwise.

On future development, opinion was more decided. More than three-quarters thought that there should be no further new housing development within the Parish, leaving around 15% in favour of new development, and about 5% of no opinion on the matter.

Preferred house types

Given that housing development of some kind would be needed, respondents were asked to identify the kind of housing that would be most acceptable. Of the housing types considered, most respondents were in favour of small houses, and some in favour of large family homes and sheltered accommodation for the elderly, but not large executive homes. Opinion was neither for nor against the development of apartments.

Affordable and social housing

On the question of affordable housing (properties to buy), 68% were against further development, whilst 32% were in favour or had no opinion. As to social housing (properties to rent) a similar polarisation of views was evident, with 26% against and 65% in favour of the same (9% no opinion).

Planning applications

Most respondents agreed strongly that all planning applications for affordable homes should be granted solely to long standing local residents or their immediate family, and that no new house building or development of any kind should be permitted on green field sites throughout the Parish.

It was generally agreed that all planning applications should be posted on the village notice boards for a minimum of four weeks.

Amenities

Law and order

Most respondents expressed qualified confidence in community policing. However, the general consensus was that there should be more police presence in the community, with some favouring the provision of a local police station, either permanent or mobile.

Questioned about a variety of other concerns, locals seemed more worried about fly tipping, burglary and dog fouling than they were about mugging, noisy neighbours or public drunkenness and rowdiness.

Local amenities

Respondents agreed that the village shop and post office were essential and regularly used; that the village hall was adequate to meet the needs of the community (although it should be made more available during the day); and that the village had ample provision of pubs and restaurants.

On the other hand, a majority felt that waiting time for an appointment at Felsted surgery was too long and that the community needed more doctors and additional surgery capacity. It was also strongly felt that there was a need for public toilets in the village.

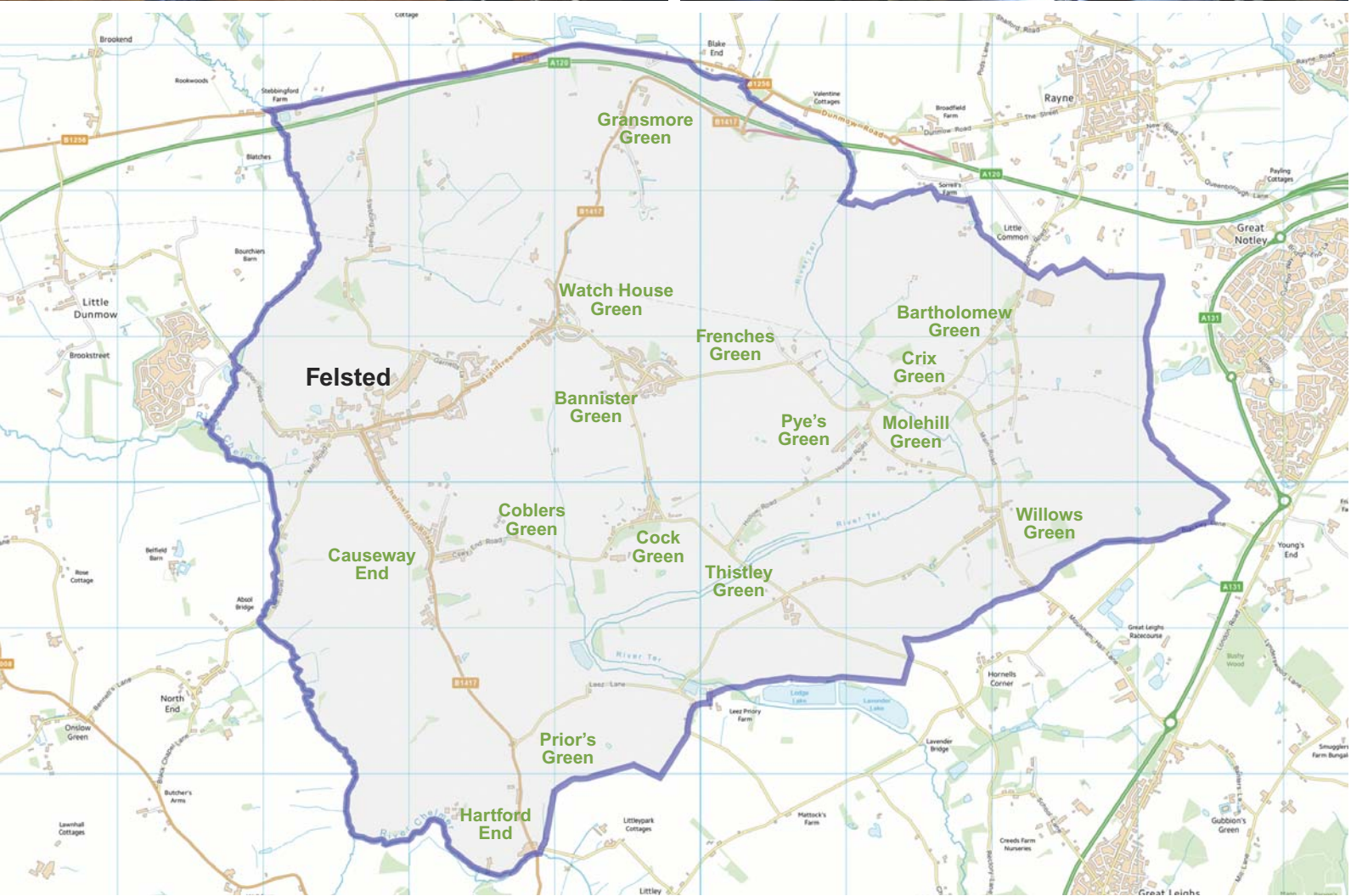
Leisure and recreation

Almost one-half of respondents (48%) were satisfied that recreational areas within the Parish were adequate for the needs of the community, but just over a quarter (27%) felt more areas were desirable. The remaining quarter had no opinion on the matter.

Similarly, by far the majority of respondents (67%) thought current playground and sports facilities were adequate to community needs, as opposed to 16% who felt more facilities were needed, and 17% who had no strong feelings either way.

Felsted School sports facilities

The great majority (70%) of respondents felt that Felsted School should make its sports facilities more available to the local community and publicise opportunities to use them. 14% disagreed, and 16% had no opinion on the matter.



SURVEY RESULTS

Amenities continued

Allotments

These are a minority interest in the community, with more than half of respondents showing little or no interest in their availability. However, of those with an opinion on the matter, 78% felt provision of allotment land was sufficient, whilst the remaining 22% would like to see greater provision.

Footpaths and bridleways

In a rural community it is no surprise to learn that local footpaths and bridleways are well used by the large majority of respondents. Most also agreed that footpaths are well marked and well kept, and that there are sufficient bridleways in Felsted and the outlying hamlets.

Business

81% of the businesses surveyed had been in operation for more than ten years, and 10% for between five and nine years. Virtually all have been on their original premises since inception.

Only 15% considered their existing premises too small, whereas 22% were actively seeking new land or premises. Whilst 22% were aware of support services offered by Uttlesford District Council, the majority (67%) were unaware of the same.

Employment

Around 900 people were employed by the businesses surveyed in 2013, more or less the same number employed in 2012. The majority were in the 20-59 year age group, with rather more full-time than part-time employees. 29% of those employed were in the professional or managerial category, with a further 50% divided evenly between manual, skilled manual and clerical categories. A small percentage of technical staff were also employed. 27% of those employed live in the Parish of Felsted, with a further 65% living within a ten-mile radius. Relatively few employees experienced difficulties in finding affordable housing in the locality (11%) or were unable to keep their job owing to transport problems (4%).

Technology

The majority (63%) of businesses surveyed felt that local IT communications were adequate to their needs, although opinion was divided on the adequacy of local internet/broadband speeds.

Traffic

Weekly traffic to and from local businesses was principally by car (67%) with the remainder divided between HGVs (15%), LGVs (11%) and light vans (9%).

Overall, the overwhelming majority of businesses surveyed (78%) thought they benefited from being located in Felsted. 18% did not think they benefited, and a smaller percentage (11%) felt their organisation suffered from being located there.

Community

The survey revealed that most local residents feel there is a real community spirit in the village, and that the outlying hamlets feel part of the Parish.

Public administration

Asked about the effectiveness of the Parish Council in communicating with local residents and ensuring their views were acted upon, most agreed that it performs well in this regard, although a significant number disagreed, with opinion being divided about two to one in the Council's favour.

Communications

Most respondents read the Felsted Parish Newsletter and find it informative, and a high proportion of them believe that a dedicated Parish website would be an asset. Internet users largely agreed that local broadband speed was adequate, and most said the same of local mobile phone coverage.

Youth survey results

A total of 296 young people took part in the Felsted Parish Plan Survey. These fell into three categories: 7-10 years old (34.5%); 11-13 years old (25%) and 14-17 years old (40.5%). The male/female breakdown was roughly even, with slightly more boys than girls in each category.

Education

The majority of the respondents attend school in the Parish of Felsted (38.7%); 24.6% are in education in Great Dunmow; and a small percentage in Braintree (7.7%) and Bishop's Stortford (1.4%). The remaining 27.5% attend school or college elsewhere.

Transport

Bus or taxi is the main means of school transport (used by 40.4%) followed by car (used by 37.3%). 18.6% of respondents walk to school, and the remaining 3.7% travel by bicycle.



SURVEY RESULTS

Youth survey results continued

Other journeys

Most journeys made outside the village by young people (other than to school or college) were by car or a lift from parents or friends (64.3%). The second most used mode of transport was bus (16.2%), followed by bike (10%) and walking (9.5%).

Sports and leisure facilities

Asked which sports and leisure facilities they use or would use if provided in the community, the reply, in order of preference, was for a hard court sports area (64%); football, rugby, hockey pitches (47%); a youth club (35%); Cubs, Scouts, Brownies, Guides (28%); and a skateboard area (26%).

Leisure time

Asked where they spent their leisure time away from school, the majority of young people said they spent it at home or at a friend's house (41.8%); 29.3% went outside the village; 17.9% occupied their time on the playing fields; and 11% wandered around the village.

Living in Felsted

The overwhelming majority of the 150 young people surveyed in this segment agreed that Felsted is a good place to live, with only two disagreeing. Most also said they felt safe living and travelling in Felsted, with only four disagreeing. Most respondents felt there was a need for more facilities for 7 to 17 year olds in the village (111 in favour, 20 against); and that drugs or alcohol abuse was not a problem in Felsted (88 disagreed it was a problem as opposed to 12 who considered it a problem).

Other questions met with a more mixed response. Crime was considered a problem locally by 26 respondents as opposed to 91 who disagreed. Large groups of youth hanging around was seen as a problem by 31 respondents as opposed to 91 who disagreed. And poor street lighting was seen as a problem by 60 respondents as opposed to a small majority of 60 to 55.

In other results, speeding traffic was seen as a problem by 99 respondents as opposed to 30 who disagreed, and domestic internet speed was considered too slow by 92 respondents as opposed to 45 who considered them adequate.

Existing facilities

The most popular local facility with young people was the Felsted village shop (used by 132 of the 146 respondents in this segment). This was followed, in order of preference, by the Memorial Hall playing field (used by 80); the Memorial Hall playground (used by 78); Felsted School facilities (used by 51); the Memorial Hall (used by 34); Bannister Green playground (used by 28); and Willows Green playground (used by 9).

Clubs and organisations

Ten local clubs and organisations were surveyed, of which eight have been in operation for more than 10 years, one for 1-4 years and one for less than 1 year. Seven have been at their present site for more than 10 years, one for 5-9 years and one for less than 1 year.

Whilst 80% of those surveyed considered their present site about the right size for their purposes and 10% considered it too small, none are actively seeking new land or premises.

60% of club and organisation members live within the Parish of Felsted; a further 38% within 10 miles of the village; and the remaining 2% more than 10 miles away.

Seven of the organisations surveyed considered local electronic communications and internet services adequate for their needs. One considered them inadequate.



Welcome to
FELSTED
PRIMARY SCHOOL
Telephone: 01371 820215



FELSTED
LITTLE ACORNS
PRE-SCHOOL
Tel: 07917 190328
email: felstedacorns@aol.com

ACTION PLAN

This section details the actions forming the Action Plan, drafted by the Parish Plan Steering Group and based on the priority issues. This Action Plan has been taken on formally by the Parish Council and includes target delivery dates for each action.

The Parish Councillors are all volunteers working on behalf of the residents of the Parish, and they need volunteers to help from the community to ensure these actions are realised over the next weeks and months. To get involved more information can be found on the Parish Council website, Parish notice boards and leaflets throughout the village.

The Sunday Times told us that Felsted is ‘one of the best places to live in the East of England’ but we need to act to make sure it stays that way. We urge you to support your Parish and get involved, join an action group, be a part of the community and collectively help to safeguard the future of Felsted as a rural Parish.

Roads

| Aim | Action | Start date | End date |
|---|---|------------|----------|
| Reduce speeding in Felsted | Set up Community Speed Watch Action Group | Jan 14 | May 14 |
| | Implement new vehicle triggered speed signs at two key sites, e.g. Station Road, Willows Green or outside schools. This is in addition to the existing sign shared with Little Dunmow | Jan 14 | Oct 14 |
| Reduce congestion and improve parking in Felsted village centre and Watch House Green | Introduce more No Stopping/No Parking Signs | Jan 14 | Jan 15 |
| | Meet with schools to promote walking buses and cycling to reduce the need for parking | Dec 13 | May 14 |
| | Work with schools to provide more parking on school premises | Dec 13 | Dec 14 |
| Promote safe and courteous behaviour by all road users | Identify and warn frequent offenders | Jan 14 | Jun 14 |
| | Find ways to promote safe cycling – cycle paths, cycling on footpath, safe walking and driving | Mar 14 | Mar 15 |
| | Promote understanding of and use of Quiet Lanes | Dec 13 | Dec 14 |

Housing and development

| Aim | Action | Start date | End date |
|---|--|------------|----------|
| Protect and enhance the rural nature of Felsted Parish | Implement Neighbourhood Plan* | Apr 14 | Apr 16 |
| | Take part proactively in Uttlesford Local Development Framework as it evolves | Dec 13 | Ongoing |
| Provide houses to rent/shared ownership for Felsted people with an established need | Implement the recent Housing Survey which established the need for exception houses to rent to Felsted people | Dec 13 | Ongoing |
| Protect and maintain green spaces in Felsted Parish | Neighbourhood Plan | Apr 14 | Apr 16 |
| | Ensure that PC owned land and Common Land is protected in perpetuity through a Green Plan as in the National Planning Policy Framework | May 14 | May 15 |
| | Maintain Parish Council owned land | Ongoing | Ongoing |
| Improve the appearance of Felsted Parish | Install and maintain more flower tubs | May 14 | Sep 14 |
| Encourage Community involvement and publicise Community events | Web site | Dec 13 | Ongoing |
| | Notice boards | Dec 13 | Ongoing |
| | Newsletter | Dec 13 | Ongoing |
| | Village events | Dec 13 | Ongoing |
| To provide earliest notice of planning applications in Felsted Parish | Post notice of planning applications on web site and on main noticeboards fortnightly | Dec 13 | Ongoing |
| | Publicise larger planning applications more effectively | Ongoing | Ongoing |
| Protect and enhance Felsted Parish | Neighbourhood Plan | Apr 14 | Apr 16 |

*A Neighbourhood Plan establishes general planning policies for the development and use of land in a neighbourhood (in our case, our Parish), like:

- where new homes and offices should be built
- what they should look like

The plan can be detailed or general, depending what local people want. Neighbourhood plans allow local people to get the right type of development for their community, but the plans must still meet the needs of the wider area. In most cases this means that neighbourhood plans have to take into account the district council's assessment of housing and other development needs in the area.

ACTION PLAN

Amenities

| Aim | Action | Start date | End date |
|--|---|------------|----------|
| Work to ensure that sufficient pressure is available for emergency use (the water pressure and supply was inadequate during the recent major fire) | Monitor water pressure and capacity | Ongoing | Ongoing |
| To get an improved, faster and more consistent broadband delivery service | Set up group to pursue alternative broadband access to those who require it | Jan 14 | Jan 15 |
| To have a greater police presence within the Parish | Meet with local police to request better contact with the residents such as a mobile office | Dec 13 | Mar 14 |
| | Publicise the police website which provides details of local crime | Dec 13 | Mar 14 |
| | Work with farmers and others to improve protection against theft – Farm Watch | Dec 13 | Jun 14 |
| | Strengthen Neighbourhood Watch initiative | Dec 13 | Jun 14 |
| To provide adequate public toilets in Felsted Centre | Identify site for additional public toilets in Felsted Centre | Dec 13 | Jan 14 |
| To encourage and protect the provision of adequate medical services to Felsted people | Work with Felsted Surgery to enhance its services | Dec 13 | Ongoing |
| | Actively resist any attempt to remove Felsted Surgery and its dispensary | Ongoing | Ongoing |
| To protect and promote the provision of a full range of amenities in Felsted Parish e.g. pubs, shops, churches, restaurants etc | Actively establish and maintain an up-to-date List of Assets of Community Value | Jan 14 | Mar 14 |
| | Support charitable organisations that serve the community –perhaps financially | Ongoing | Ongoing |
| Provide outdoor space for play and sports | Protect and maintain playing fields at Felsted Centre, Bannister Green, Willows Green and Ravens Crescent | Ongoing | Ongoing |
| | Improve the playground facilities at Bannister Green and Willows Green | Mar 14 | May 15 |
| | Actively promote community use of Felsted's school facilities | Ongoing | Ongoing |

Community

| Aim | Action | Start date | End date |
|--|---|------------|----------|
| Improve the Parish Council website to encourage community interaction and the sharing of information about Parish events | Improve the Felsted Parish Council web site – perhaps engage an editor? | Ongoing | Apr 14 |
| | Add Parish Plan to the Felsted Parish website | Jan 14 | Jun 14 |
| Raise community awareness of events and useful Parish information | Add more notice boards where needed and where suitable access is found | Dec 13 | Jun 14 |
| | Re-site Bannister Green notice board where more residents can read it | Dec 13 | Jun 14 |
| Improve and develop the Felsted Parish newsletter to encourage involvement in community activities | Develop and expand the newsletter | Jan 14 | Jun 14 |
| | Find additional contributors | Jan 14 | Jun 14 |
| | Establish a long-term editorial team | Jan 14 | Jun 14 |
| | Share distribution – investigate commercial delivery costs | Jan 14 | Jun 14 |
| | Publish on Felsted Parish web site | Jan 14 | Jun 14 |
| Raise public awareness of special events happening in the Parish | Web site | Dec 13 | Ongoing |
| | Notice boards | Dec 13 | Ongoing |
| | Newsletter | Dec 13 | Ongoing |
| | Village events | Ongoing | Ongoing |

GET INVOLVED!

Your village needs you. Make sure that Felsted is truly a good place to live for years to come.



Dicky Howett, Winner Parish photo competition 2013



Contact details
felsted_pc@btconnect.com
Parish office, URC Hall, Stebbing Road
Felsted CM6 3JD
01371 823071

Designed by
Simpsons Creative, Bishop's Stortford
www.SimpsonsCreative.co.uk