

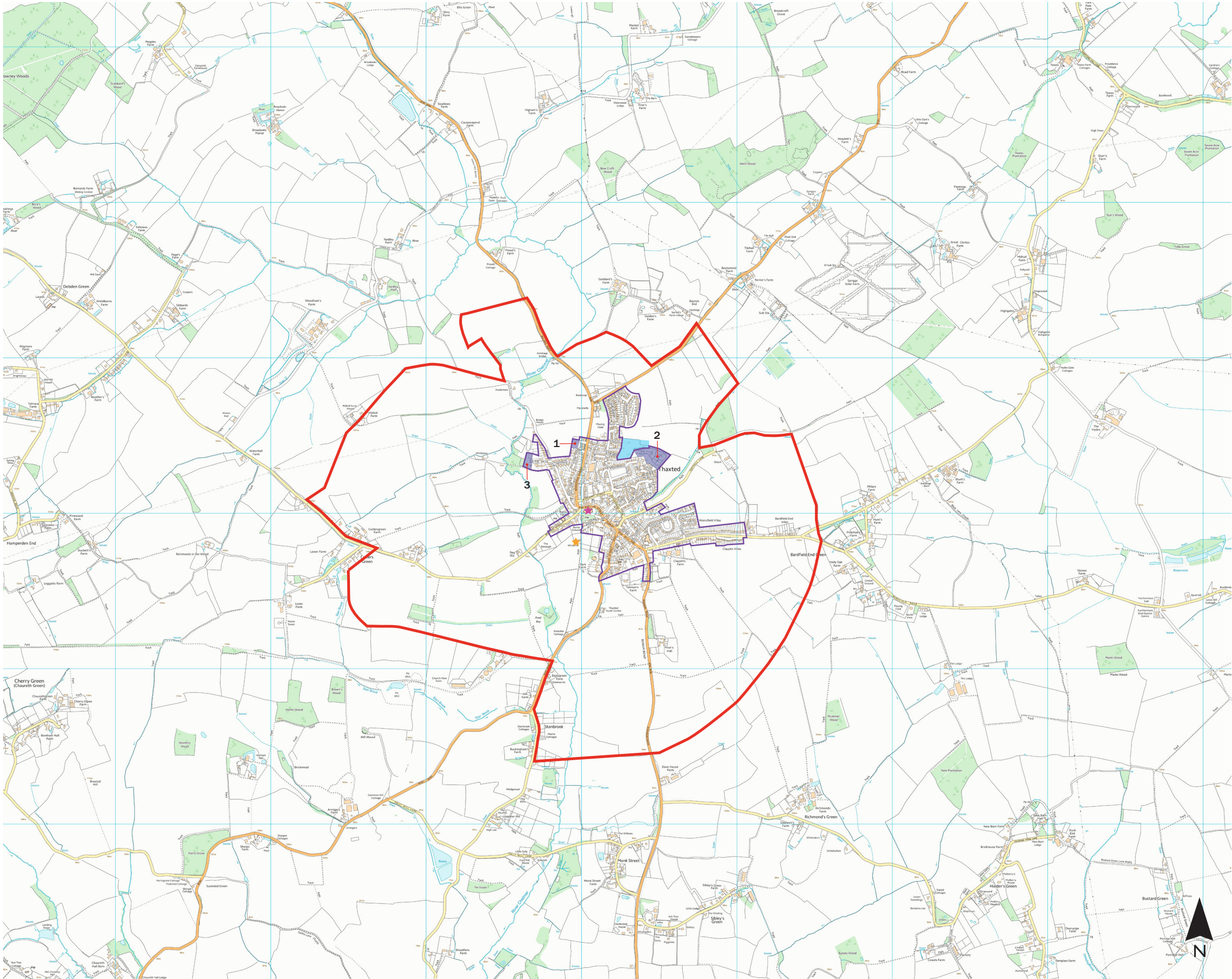
THAXTED, UTTLESFORD

LANDSCAPE CHARACTER ASSESSMENT

FIGURES

September 2016

- FIGURE 1 STUDY AREA
- FIGURE 2 SITE CONTEXT (AERIAL PHOTOGRAPH)
- FIGURE 3 TOPOGRAPHY



- Legend**
- Study area - outer edge (as agreed with Thaxted Parish Council)
 - Study area - inner edge (as agreed with Thaxted Parish Council)
 - Church of St John the Baptist
 - John Webb's Windmill
 - Approved planning applications:
 - 1. Development of Short Breaks Centre for 8 residents on land to rear of 1-12 Little Maypole. Approved 22nd May 2009. Ref: UTT/0302/09/FUL.
 - 2. Development of 47 dwellings on land off Wedow Road. Approved 22nd May 2014. Ref: UTT/13/1170/OP.
 - 3. Development of 3 detached dwellings at Chelmer House, Watling Lane. Approved 20th August 2013. Ref: UTT/13/1644/OP.
 - Land allocated for education uses or other community uses (taken from the emerging Uttlesford Local Plan)

Project: Thaxted Landscape

Character Assessment

Client: Thaxted Parish Council

Date: September 2016

Scale: 1:25,000 @ A3

Status: FINAL

Figure 2

Site context (aerial photograph)



Legend

Study area - outer edge

Study area - inner edge

Church of St John the Baptist

John Webb's Windmill

Recent development
(post aerial photograph taken 2006)



Stansted:
Unit 1, The Exchange,
9 Station Road, Stansted, CM24 8BE

t +44 (0)1279 647044
e office@lizlake.com
www.lizlake.com

Bristol:
1 Host Street,
Bristol, BS1 5BU

t +44 (0)117 927 1786

Nottingham:
Sutton Place, 49 Stoney St,
Nottingham NG1 1LX

t +44 (0)115 784 3566

LIZ LAKE
ASSOCIATES
LANDSCAPE ARCHITECTS

- Landscape Design
- Urban Design
- Residential
- Public Realm
- Masterplanning
- Landscape Planning
- Heritage Landscapes
- Gardens and Estates
- Restoration and Conversion
- Places of Worship
- Expert Witness
- Hospitality
- Education
- Retail / Office
- Community
- Ecology
- Arboriculture
- 3D / Graphic Design