

UDC HIA 1001.2 Erratum: Uttlesford HIA Maps

1001.2E



UDC HIA 1001.2 Erratum: Uttlesford HIA maps

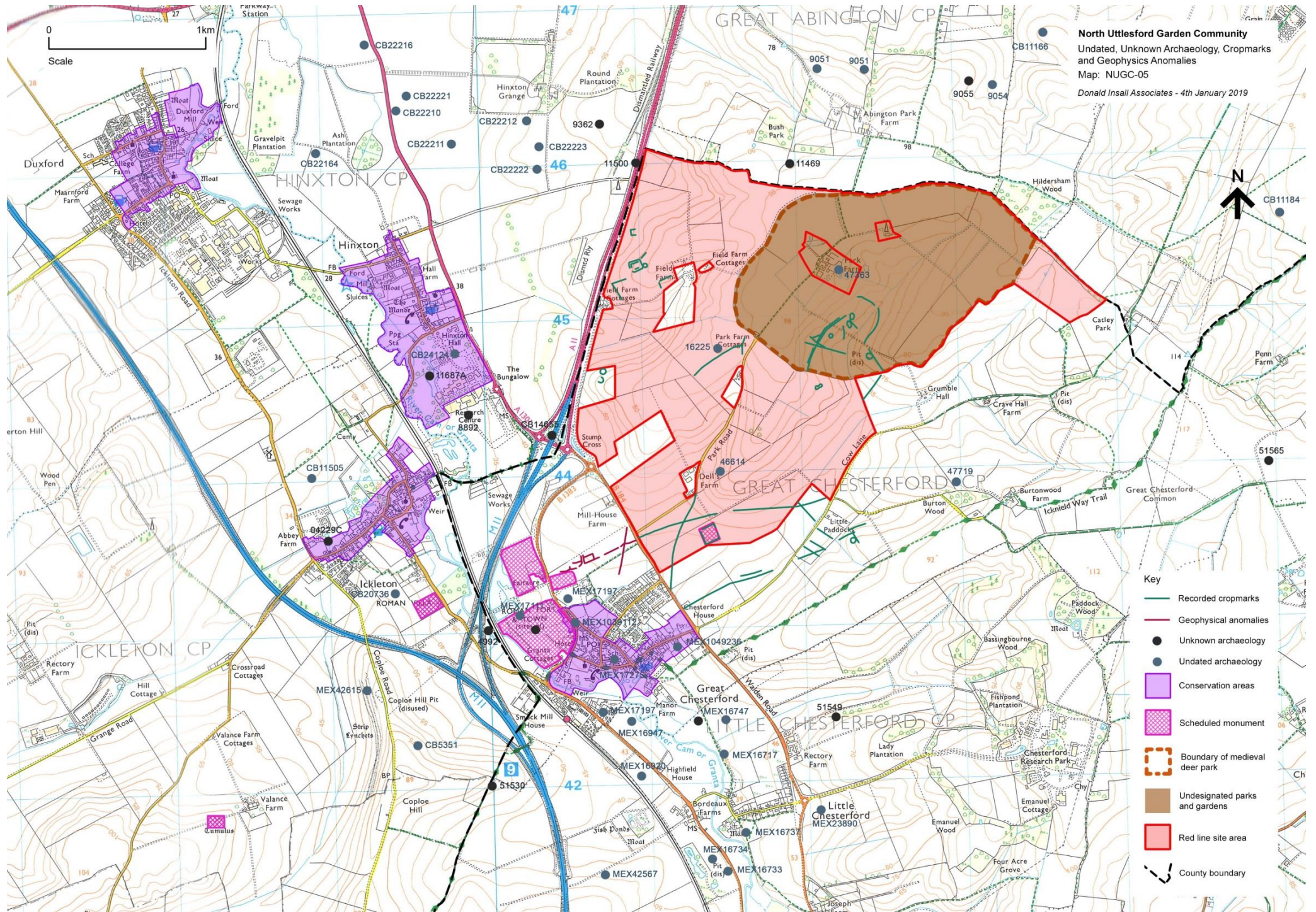
Two maps were omitted in error during merging of the above January 2019 HIA document as explained below;

Erratum to HIA report of 24 January 2019	Report Map reference	Map Title	Place in corrected HIA document
Omission of map for NUGC illustrating Undated/Unknown Archaeology, Cropmarks and Geophysics Anomalies	NUGC-05	North Uttlesford Garden Community Undated, Unknown Archaeology, Cropmarks and Geophysics Anomalies	Follows P35 as the 5th map
Omission of map for West of Braintree illustrating Development Concept Criteria	AFGCWB-06	West of Braintree Garden Community Development Concept Criteria	Follows P183 as the 6th map.

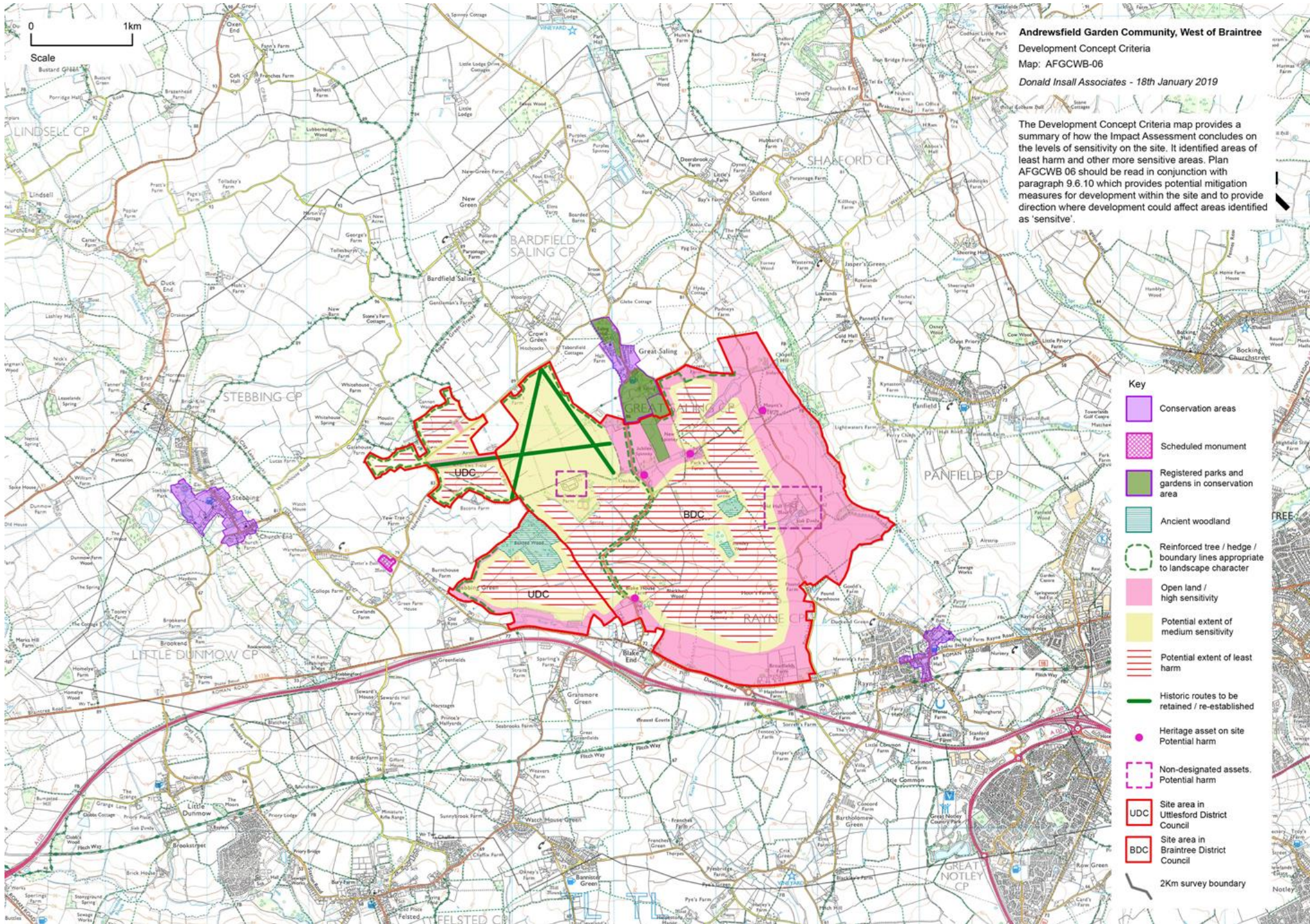
Please find omitted maps below;

- North Uttlesford GC: NUGC 05 (Undated archaeology)
- West of Braintree GC: AFGCWB 06 (Development Concept Criteria)

NUGC-05 North Uttlesford Garden Community



AFGCWB-06 West of Braintree Garden Community



Andrewsfield Garden Community, West of Braintree
 Development Concept Criteria
 Map: AFGCWB-06
 Donald Inshall Associates - 18th January 2019

The Development Concept Criteria map provides a summary of how the Impact Assessment concludes on the levels of sensitivity on the site. It identified areas of least harm and other more sensitive areas. Plan AFGCWB 06 should be read in conjunction with paragraph 9.6.10 which provides potential mitigation measures for development within the site and to provide direction where development could affect areas identified as 'sensitive'.

- Key**
- Conservation areas
 - Scheduled monument
 - Registered parks and gardens in conservation area
 - Ancient woodland
 - Reinforced tree / hedge / boundary lines appropriate to landscape character
 - Open land / high sensitivity
 - Potential extent of medium sensitivity
 - Potential extent of least harm
 - Historic routes to be retained / re-established
 - Heritage asset on site
 - Non-designated assets, Potential harm
 - Site area in Utlesford District Council
 - Site area in Braintree District Council
 - 2Km survey boundary